

# **SR Scales<sup>®</sup>**

by **SR<sup>®</sup>** Instruments, Inc.

**Model SRV947**



**Portable Platform Scale**

## **Operating and Service Manual**

---

---

## TABLE OF CONTENTS

<b>TABLE OF FIGURES.....</b>	<b>2</b>
<b>PACKING CHECKLIST – MODEL SRV947.....</b>	<b>3</b>
<b>ASSEMBLY.....</b>	<b>4</b>
<b>SYSTEM DESCRIPTION AND INTENDED USE.....</b>	<b>5</b>
<b>MAINTENANCE AND CLEANING.....</b>	<b>6</b>
<b>STORAGE AND TRANSPORTATION .....</b>	<b>6</b>
<b>SPECIFICATIONS.....</b>	<b>7</b>
<b>BUTTON FUNCTIONS .....</b>	<b>8</b>
<b>BASIC SYSTEM OPERATION.....</b>	<b>9</b>
<b>BATTERY REPLACEMENT .....</b>	<b>9</b>
<b>CALIBRATION.....</b>	<b>10</b>
<b>CALIBRATION CONT'D.....</b>	<b>12</b>
<b>TROUBLESHOOTING .....</b>	<b>12</b>
<b>WARRANTY.....</b>	<b>13</b>

---

---

## TABLE OF FIGURES

<b>Figure 1: Assembled SRV947 .....</b>	<b>4</b>
<b>Figure 2: Battery Compartment.....</b>	<b>4</b>
<b>Figure 3: Button Display .....</b>	<b>8</b>
<b>Figure 4: Calibration Tolerance Table .....</b>	<b>10</b>
<b>Figure 5: Calibration Button .....</b>	<b>11</b>
<b>Figure 6: Button Display .....</b>	<b>11</b>

---

---

## PACKING CHECKLIST – Model SRV947 Portable Platform Scale

√	DESCRIPTION	QUANTITY
	PORTABLE PLATFORM SCALE	1 ea
	AA 1.5-VOLT ALKALINE BATTERIES	6 ea
	CALIBRATION CERTIFICATE	1 ea
	WARRANTY CARD	1 ea
	MANUAL	1 ea

## ASSEMBLY



**Figure 1: Assembled SRV947**

To install included six (6) AA 1.5-volt alkaline batteries, follow steps below:

- STEP 1:** Unlatch tab on the Battery Compartment cover on bottom of scale (figure 2).
- STEP 2:** Insert batteries according to instructions on the Battery Compartment holder.
- STEP 3:** Replace Battery Compartment cover.



**Figure 2: Battery Compartment**

Continued next page

---

---

## REPLACEMENT PARTS AND ACCESSORIES

Part #	Description
CA8974	Display Label
MF2284	Replacement Feet

---

---

## SYSTEM DESCRIPTION AND INTENDED USE

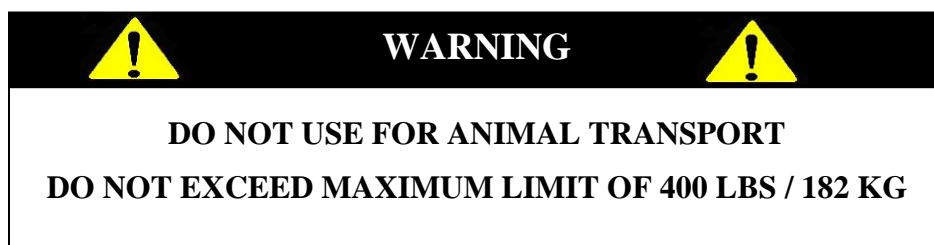
### SYSTEM DESCRIPTION

The SRV947 Portable Platform Scale is a low profile design, 2 in. height, which allows the animal easy step access. The SRV947 Scale can be used in a fixed location or as a portable scale. The Scale employs the latest in microprocessor and load cell technology to provide accurate and repeatable weight data. Six (6) identically matched transducers are strategically placed to ensure an accurate representation of the patient's weight.

The patient's weight is displayed on an LCD screen. With a push of a button, weight data may be viewed in either pounds or kilograms.

### INTENDED USE

The SRV947 Portable Platform Scale is a lightweight portable scale designed for use as a weighing system for animals not exceeding 400 pounds or 182 kilograms, gross weight. Please read the following warnings to avoid injury to the animal or attendant.

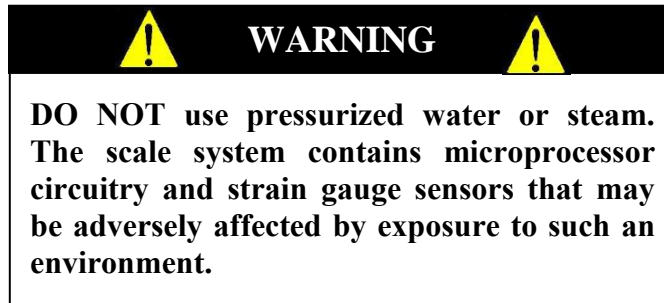


---

---

## MAINTENANCE and CLEANING

The SRV947 Portable Platform Scale is made with a powder-coated aluminum platform. Exercise caution when cleaning the display window as it is made of a clear plastic and can be scratched by abrasive cleaners. Mild soap and water is recommended for general cleaning and disinfecting.



---

---

## STORAGE and TRANSPORTATION

### STORAGE

If storing this equipment for periods longer than three (3) months, remove the batteries. To maintain proper operation of this instrument, storage and transport conditions should not vary outside the following conditions: Relative Humidity 0% to 85%, Ambient Temperature 14°F to 122°F (-10°C to +50°C).

### TRANSPORTATION

The SRV947 Portable Platform Scale has four (4) recessed handles on the underside of the scale for easy portability.

## SPECIFICATIONS

<b>MAXIMUM WEIGHT CAPACITY</b>	400 lb / 182 kg
<b>PLATFORM SIZE</b>	24 in x 48 in x 2 in (61 cm x 122 cm x 5 cm)
<b>DISPLAY TYPE</b>	1.0" LCD display with 5 active digits
<b>DISPLAY RESOLUTION</b>	0.2 lb / 0.1 kg
<b>ACCURACY</b>	0.2% +/- 2 digits of displayed resolution for calibrated range
<b>AUTO ZERO</b>	One button operation
<b>AUTO POWER DOWN</b>	Approximately 120 seconds
<b>AVERAGING</b>	Automatic digital filter
<b>POWER SUPPLY</b>	Six (6) AA 1.5 volt alkaline batteries
<b>CALIBRATION</b>	Calibration is traceable to NIST standards
<b>OPERATING CONDITIONS</b>	Normal operating conditions for this product: Ambient Temperature Range: 68°F to 85°F (20°C to 30°C), Relative Humidity Range: 0%-85%. Avoid exposure to high-pressure water or steam.
<b>TRANSPORT and STORAGE</b>	Storage and transport conditions should not vary outside the following conditions: Relative Humidity 0% to 85%, Ambient Temperature 14°F to 122°F (-10°C to +50°C). Remove batteries if storing longer than three (3) months.

## BUTTON FUNCTIONS

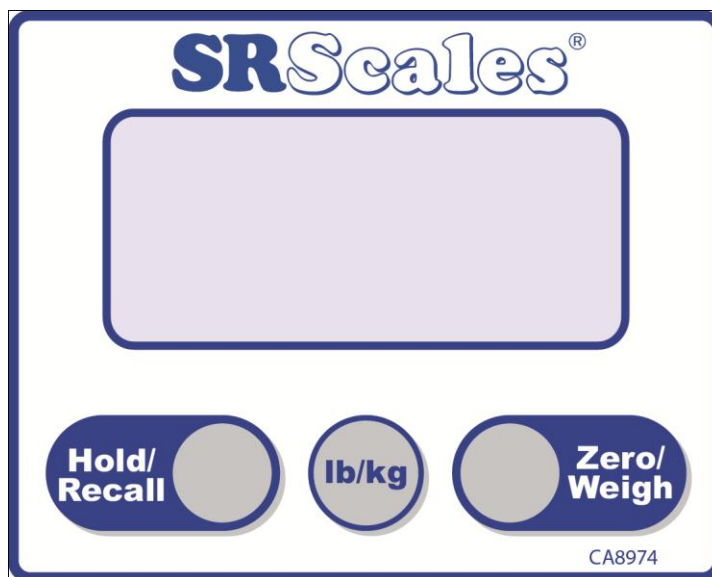


Figure 3: Button Display

### ZERO/WEIGH



The “**ZERO/WEIGH**” button is used to zero the system before placing a patient onto the scale system. Ensure that nothing is in contact with the weighing surface during this procedure. The display will read “**0.0 LB**” (or **KG**). The button also wakes up the display and shows the patient’s weight if it should Auto Power Down before the weighing process is done.

### HOLD/RECALL



The “**HOLD/RECALL**” button freezes the displayed weight and stores it away in memory. Press “**HOLD/RECALL**” to store the weight into memory. To recall last weight reading, press “**HOLD/RECALL**” button once scale has shut down.

### LB/KG



Weight data may be viewed in either pounds or kilograms. Pressing the “**LB/KG**” button allows the operator to toggle between the two readings. Pounds are displayed in a resolution of 0.2, kilograms are displayed in a resolution of 0.1.



---

---

## BASIC SYSTEM OPERATION

### SETTING SYSTEM ZERO



Make sure the scale is free and clear of any obstructions. Press and hold the “ZERO/WEIGH” button to zero the system. In a few seconds, the display will read “0.0 LB” (or **KG**). It is recommended that the system be zeroed prior to each new patient.

After the scale has been set to zero, position the patient on the scale. Display will indicate the patient’s weight in either pounds or kilograms.

In this default mode, the weighing surface remains active. If scale shuts down, press the “ZERO/WEIGH” button once to wake display and take reading.

### HOLD/RECALL



The scale display is designed to automatically lock the reading on the display, and store the reading in memory, once the weight is stable. If scale cannot lock in reading due to patient movement, press the “HOLD/RECALL” button to automatically lock the display and store the reading.

To return to WEIGH mode when finished, press the “ZERO/WEIGH” button once. The display will become active.

Once the scale has shut down, the last stored weight can be recalled by pressing the “HOLD/RECALL” button. Last stored weight will be displayed until the scale shuts down or the “ZERO/WEIGH” button is pressed.

---

---

## BATTERY REPLACEMENT

The Portable Platform Scale contains six (6) AA alkaline 1.5-volt batteries. The low battery indicator is displayed when the battery power is insufficient to power the scale.

Refer to Assembly Instructions (Figure 2).

## CALIBRATION

**NOTE:** Ensure that nothing is in contact with the scale system during this procedure. Remove hands from the system when noting the displayed calibration results.

### CHECKING CALIBRATION

**STEP 1:** Select two (2) known calibrated weights, traceable to NIST.

**NOTE:** The first weight should be at least 200 pounds (half of the maximum scale capacity). The second weight should be less than half of the first weight. **DO NOT USE** barbells or uncalibrated weights.

**STEP 2:** Zero the scale by pressing and holding “**ZERO / WEIGH**” button.



**STEP 3:** Place the first calibrated weight on the scale. Wait for scale to stabilize; note scale reading. Remove weight.

**STEP 4:** Place second calibrated weight on scale. Wait for scale to stabilize; note scale reading. Remove weight.

**STEP 5:** The scale readings for both weights should be within the Calibration Tolerance Table plus or minus one digit of displayed resolution (Figure 4).

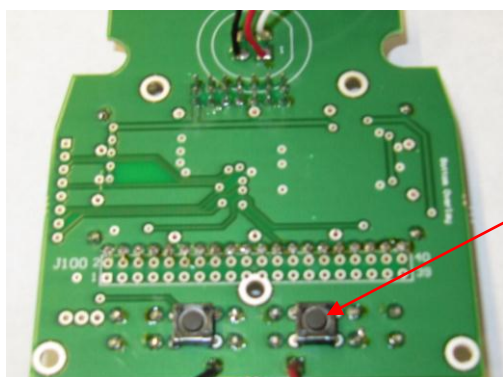
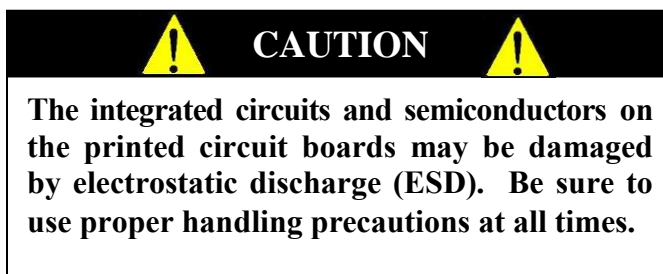
CALIBRATION TOLERANCE TABLE		
LOW LIMIT	APPLIED LOAD	HIGH LIMIT
20.0	20.0	20.0
50.0	50.0	50.0
99.8	100.0	100.2
199.6	200.0	200.4
299.4	300.0	300.6
399.2	400.0	400.8

**Figure 4: Calibration Tolerance Table**

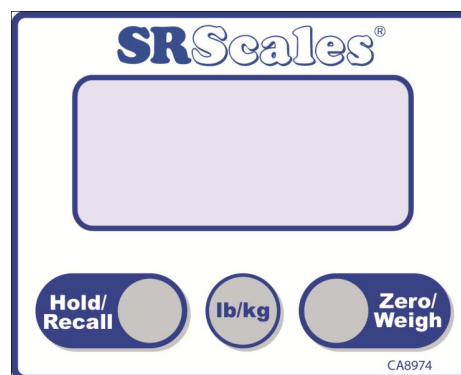
 <b>IMPORTANT</b> 
<b>CALIBRATION CHECK</b> Qualified service personnel only should perform this procedure. Load cells have no user serviceable components and should not be tampered with for any reason. Re-calibration is generally not required, but should be verified periodically to ensure accuracy. The recommendation for calibration check is at least once every 12 months, or as individual maintenance policy requires.

## CALIBRATION cont'd

### SETTING CALIBRATION



**Figure 5: Calibration Button**



**Figure 6: Button Display**

**NOTE:** Ensure that nothing is in contact with the scale system during this procedure and that all six (6) feet are touching a level surface. Remove hands from the system when noting the displayed calibration results. (Use a known calibrated weight traceable to NIST.)

**STEP 1:** Remove the display cover from bottom of scale

**STEP 2:** Press the “ZERO/WEIGH” button to turn the scale on.

**STEP 3:** Press “Lb/Kg” button and toggle to select lb.

**STEP 4:** Press the left button on rear of display. Display will read “CAL”

**STEP 5:** Toggle the “ZERO/WEIGH” button to read “FULL” then press “HOLD/RECALL”.

**STEP 6:** Display will read “440.0”, set this value to the value of the selected weight

- Press “HOLD/RECALL” to select a digit position
- Press the “ZERO/WEIGH” button to change the value of the digit
- When display reads “SAVE”, press the “HOLD/RECALL” button to cycle through “Savd” and return to “CAL”

**STEP 7:** Toggle the “ZERO/WEIGH” button to read “2 Pt” then press “HOLD/RECALL”.

## CALIBRATION cont'd

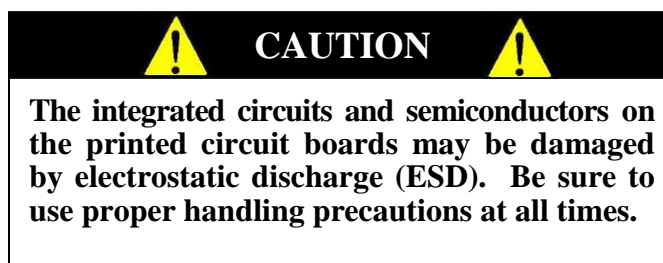
**STEP 8:** Display will read “ZERO”. Ensure no weight is on the platform, then press “**HOLD/RECALL**”

**STEP 9:** Display will read “FULL”. Add the selected weight to the platform. Wait for the weight to stabilize, then press “**HOLD/RECALL**”

**STEP 10:** Press “**HOLD/RECALL**” to cycle through the number “.8037”. **DO NOT CHANGE THIS NUMBER**

**STEP 11:** When display reads “SAVE”, press the “**HOLD/RECALL**” button to cycle through “Savd” and return to “CAL”

**STEP 12:** Calibration is completed. Press the left button on rear of display to return to run mode. Allow time for scale to turn off.



## TROUBLESHOOTING

SYMPTOM	REASON/CORRECTIVE ACTION
Display reads LOW	Battery needs to be replaced.
Display reads LOW	Ensure scale is on a level surface. Check to make sure all six feet are touching ground and ensure that nothing is touching bottom or sides of platform.
For additional information or assistance, phone our Service Hotline: 1-800-654-6360 or e-mail: <a href="mailto:sri@srinstruments.com">sri@srinstruments.com</a>	

---

## WARRANTY

### TWO (2) YEAR LIMITED WARRANTY

Each **SR Scales**® system is manufactured with high quality components. SR Instruments, Inc. warrants that all new equipment will be free from defects in material or workmanship, under normal use and service, for a period of two (2) years from the date of purchase by the original purchaser. Normal wear and tear, injury by natural forces, user neglect, and purposeful destruction are not covered by this warranty. Warranty service must be performed by the factory or an authorized repair station. Service provided on equipment returned to the factory or authorized repair station includes labor to replace defective parts. Goods returned must be shipped with transportation and/or broker charges prepaid. SR Instruments, Inc.'s obligation is limited to replacement of parts that have been so returned and are disclosed to SR Instruments, Inc.'s satisfaction to be defective. The provisions of this warranty clause are in lieu of all other warranties, expressed or implied, and of all other obligations or liabilities on SR Instruments, Inc.'s part, and it neither assumes nor authorizes any other person to assume for SR Instruments, Inc. any other liabilities in connection with the sale of said articles. In no event shall SR Instruments, Inc. be liable for any subsequent or special damages. Any misuse, improper installation, or tampering, shall void this warranty.

### DAMAGED SHIPMENTS

Title passes to purchaser upon delivery to Transportation Company. Any claims for shortage or damage should be filed with the delivery carrier by purchaser.

### RETURN POLICY

All products being returned to SR Instruments, Inc. require a Return Goods Authorization number (RGA). To receive an RGA, call our Technical Service Team at 716-693-5977 or toll-free in the USA and Canada at 800-654-6360.

When inquiry is made, please supply model and serial numbers, purchase order, if the scale was bought on contract, and reason for return.

Generally, deleted, damaged, and outdated merchandise will not be accepted for credit. A minimum restocking charge of 15% will be assessed on return of current merchandise.

All returns are to be shipped FREIGHT PREPAID to: SR Instruments, Inc., 600 Young Street, Tonawanda, NY 14150.

### RESTOCKING FEE

- **15% fee** for any scale that has been opened and used
- **10% fee** for any scale returned that has been ordered incorrectly or refused delivery with no model change
- **5% fee** if an error in ordering has been made and a different model exchanged
- **No fees** will be charged if the scale is returned because of an error on the part of SR Instruments, Inc.
- **No returns** accepted after 60 days.

# **SR**Scales®

By **SR** Instruments, Inc.

**Precision & Technology in  
Perfect Balance®**